



European Service Support Group

Technical Information & Parts Supply



KA191EK

RANDOM ORBITAL SANDER

TYPE 1

Introduction

Exploded
Drawing

E13838

Bill Of Material

KA191EK---A

New Parts

37

Main
Menu

24 – 06 - 04
SEAN HOLDEN

KA191EK

MANUFACTURING PLANT

JINLI

LAUNCH DATE

JULY 2004

BULK DATE

JULY 2004

PRODUCT ENGINEER

SEAN HOLDEN

Program Manager/Engineer

TERESA RODRIGUEZ



Type No.

1

CURRENT STATUS & MAJOR CHANGES .

LAUNCH MARKETS & QUANTITIES

GB

QS

CH

XE

PRODUCT DETAILS

- Variable speed control allows the tool to be suited to the material
- 480 watt powerful motor for fast stock removal on large areas
- Will not leave swirl marks
- Ideal for preparing a wooden surface for varnishing
- Quick fit paper attachment for more efficient sanding action and easy paper change
- On board dust extraction for portability and a cleaner working environment

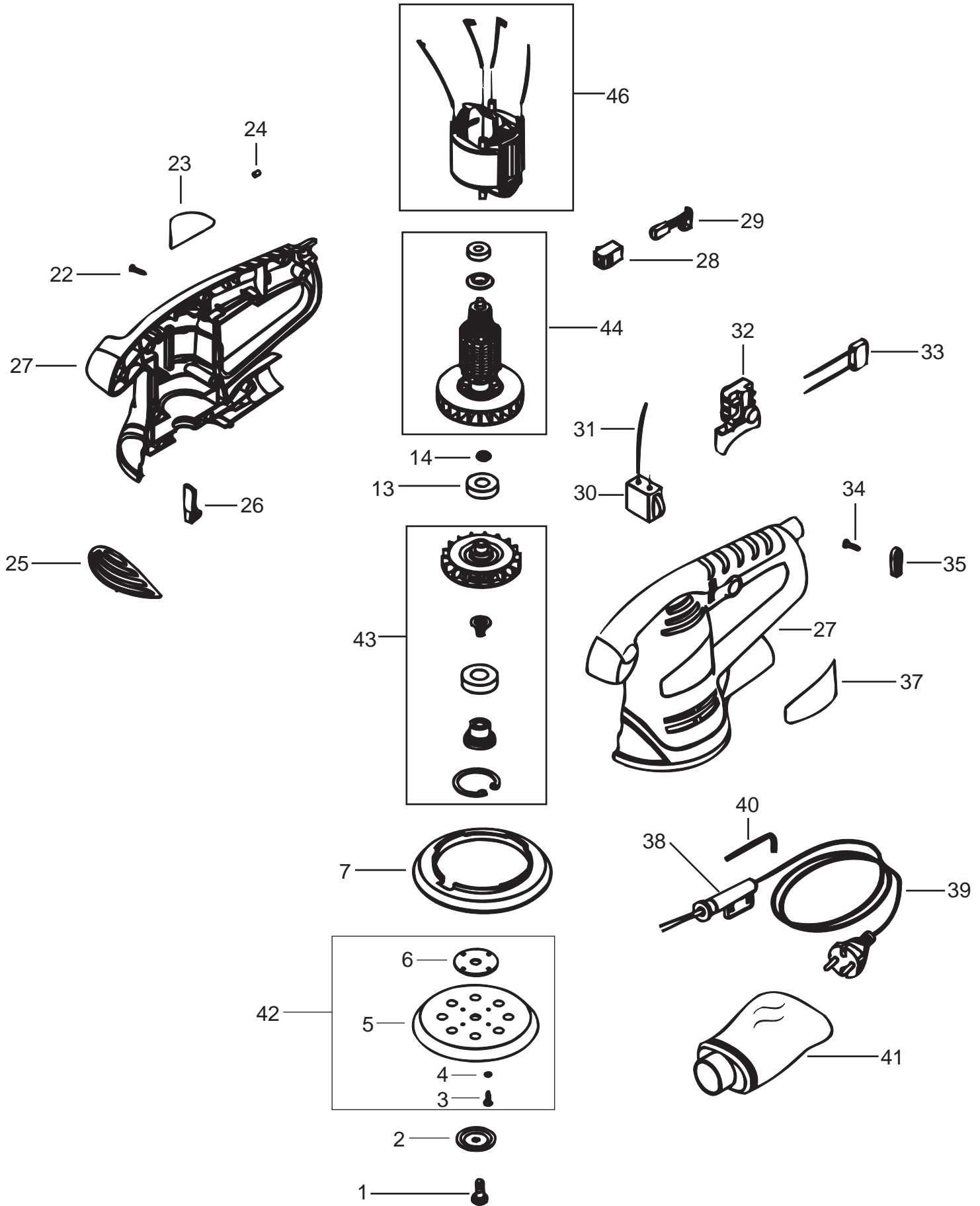
Technical Information

Voltage
Power Input
No Load Speed

230 volt
480 watt
4000 – 11000 rpm

Eccentricity
Orbit diameter
Paper size
Platen size

2.5 mm
5 mm
125 mm
125 mm



Black & Decker Bill of Materials - PARTS LIST

Product Number KA191EK---A			Product Description RADOM ORBITAL SANDER			Type Identifier	
Item Number	Quantity Per	Part Number	Part Description	Variant Description	Type Description	Market Codes	Refer to R.I.
1	1	596345-00	SCREW				No
2	1	596346-00	WASHER				No
3	4	596559-00	SCREW				No
4	4	596560-00	WASHER SPRING				No
5	1	596347-00	RUBBER PAD				No
6	1	596561-00	CONNECTOR	PLATEN			No
7	1	596348-00	SHROUD				No
11	1	596562-00	SCREW				No
13	1	596355-00	BEARING				No
14	1	596356-00	WASHER				No
22	9	596364-00	SCREW				No
23	1	596365-00	RATING PLATE				No
24	4	596366-00	PIN				No
25	1	596367-00	INSERT				No
26	1	596368-00	BOOT				No
27	1	596369-00	CLAMSHELL SET				No
28	2	596370-00	BRUSHBOX SA				No
29	2	596371-00	BRUSH				No
30	1	596372-00	SPEED REGULATOR				No
31	1	596373-00	LEADWIRE				No
32	1	596374-00	SWITCH SA				No
33	1	596375-00	CAPACITOR				No
34	3	596376-00	SCREW				No
35	1	596377-00	CORD CLAMP				No
37	1	596379-00	BRAND LABEL				No
38	1	596380-00	CORD PROTECTOR				No
39	1	596381-00	CORDSET			GB	No
39	1	596382-00	CORDSET			QS	No
39	1	596383-00	CORDSET			CH	No
39	1	596384-00	CORDSET			XE	No
40	1	596378-00	WRENCH				No
41	1	596385-00	DUSTBAG				No

Black & Decker Bill of Materials - PARTS LIST

39	1	596384-00	CORDSET			XE	No
40	1	596378-00	WRENCH				No
41	1	596385-00	DUSTBAG				No
42	1	596563-00	PLATEN	SA			No
43	1	596529-00	ECCENTRIC SA				No
44	1	596530-00	ARMATURE SA				No
46	1	596531-00	FIELD SA				No

New Parts

KA191EK

ROS

Part Number	Part Description
596345-00	SCREW
596346-00	WASHER
596347-00	RUBBER PAD
596348-00	SHROUD
596355-00	BEARING
596356-00	WASHER
596364-00	SCREW
596365-00	RATING PLATE
596366-00	PIN
596367-00	INSERT
596368-00	BOOT
596369-00	CLAMSHELL SET
596370-00	BRUSHBOX SA
596371-00	BRUSH
596372-00	SPEED REGULATOR
596373-00	LEADWIRE
596374-00	SWITCH SA
596375-00	CAPACITOR
596376-00	SCREW
596377-00	CORD CLAMP
596378-00	WRENCH
596379-00	BRAND LABEL
596380-00	CORD PROTECTOR

Please DO NOT order any parts until a Service Change Note is published.

Part Number	Part Description
596381-00	CORDSET
596382-00	CORDSET
596383-00	CORDSET
596384-00	CORDSET
596385-00	DUSTBAG
596529-00	SA ECCENTRIC
596530-00	SA ARMATURE 230V
596531-00	SA FIELD 230V
596559-00	SCREW
596560-00	SPRING WASHER
596561-00	PLATEN CONNECTOR
596562-00	SCREW
596563-00	PLATEN SA

Any queries please contact the European Service Support Group

Martin Cook : 0044 1753 500640

Steve Hurt : 0044 1753 500830

Martin Chadwick : 0044 1753 500540

Sean Holden : 0044 1753 500583

Please DO NOT order any parts until a Service Change Note is published.